

TOPi® Process for monitoring and optimisation

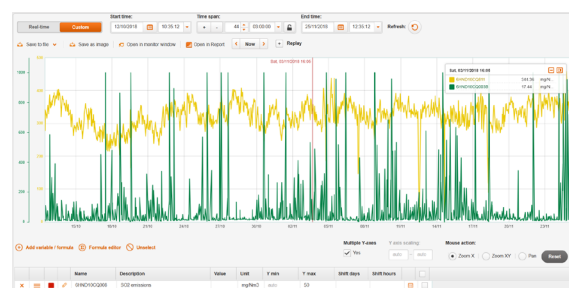
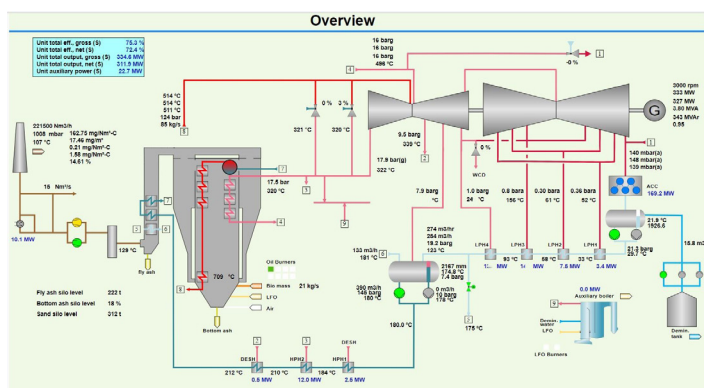
TOPi Process strengthens performance and condition monitoring. It is an ideal, user-friendly analysis and optimisation tool providing efficient reporting for operators and engineers in any type of power plant.

MAIN FEATURES

- Process and performance calculations and visualisation of the results with process displays.
- Thermal condition, water chemistry, mechanical performance and emission monitoring.
- Table-based and graphical reporting on any data and transferring the data to other systems, such as Excel.
- User-friendly trending tool with zooming and ad-hoc calculations for detailed analysis and reporting.
- Remote support services (as an optional extra) from NG Nordic's power plant specialists.

MONITOR ON YOUR PC / TABLET / SMART PHONE, FOR EXAMPLE:

- The plant's efficiency, power generation, heat transfer coefficient in superheater, CO₂ emissions, live steam temperature etc. - Now or at a particular point in the past.
- What are your plant emissions (based on the LCP/BAT* directive)?
- Check if the steam temperature and pressure are within limits.
- Does the pump performance meet the manufacturer's reference curve.
- Are the turbine vibrations within range and are there any abnormal situations.
- Or design a special diagram for your important KPIs.



*) LCP = Large Combustion Plant,
BAT = Best Available Techniques