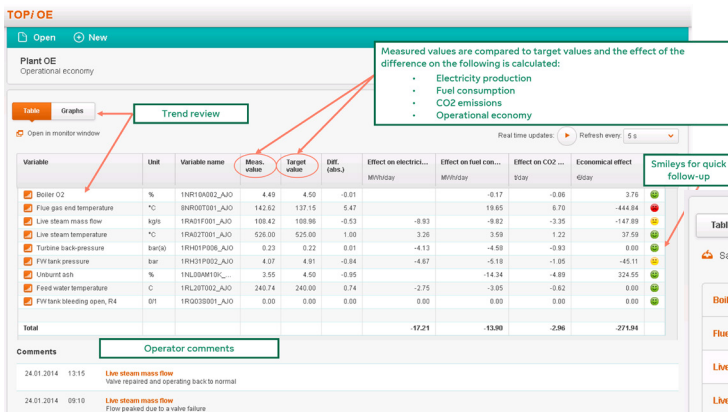
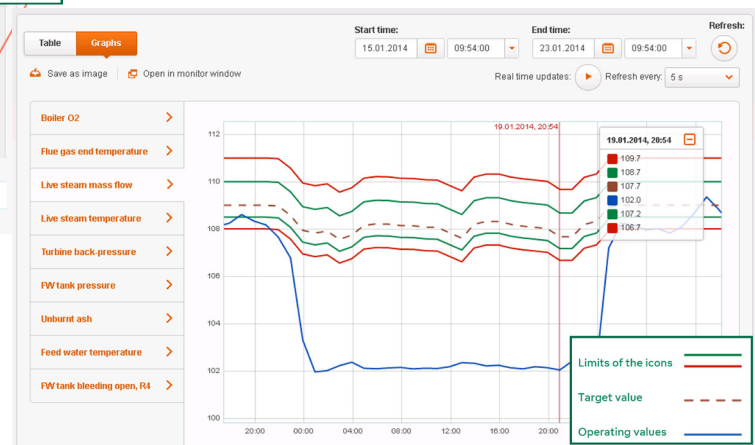


TOPi® OE Operational Economy tool

TOPi OE Operational Economy offers operators a powerful way to enhance plant performance and achieve remarkable savings. It is designed to ensure efficient process monitoring.



TOPi OE TREND DISPLAY ALLOWS DETAILED ANALYSES OF QUANTITY VALUES



Preset graphs for measurement and target values with boundaries included

- The monitored quantity is based on direct measurement and target values.
- The impact of process parameters on efficiency is easy to detect.
- The effects on production, emissions and operational economy are constantly updated.
- The illustrative trend display comes complete with boundary lines and target values.
- Time based user commentary e.g. for the next shift.

The user can easily see the monitored quantities within their boundary lines and clearly see the effect of their corrective actions.

COMMENTARY WITH TIME STAMPS, E.G.

- Reasons why the target has not been reached
- Instructions on how to get to the target
- Description of what actions were taken

TOPi OE IS INTENDED FOR ANY POWER PLANT AND WILL QUICKLY BRING ADDITIONAL VALUE TO THE CUSTOMER.

Improve your plant performance and achieve savings.

Estimated cost savings 300-400 k€/year for a large CHP plant (P > 300 MW).