

# Fortum Recycling & Waste

Sustainability Key Figures 2023



# This is Fortum Recycling & Waste

We are Rethinking Recycling and leading the way towards a revolution of materials. Solving problems is in our DNA and our mission is to transform waste streams back to essential raw materials. Our role is to find solutions for our customers' environmental and waste challenges to enable circularity of materials.



## Waste Management Services

We offer turnkey waste management services in the Nordics and the UK. We handle all types of waste and specialize in hazardous waste management.



## Environmental Construction Services

We offer solutions for sustainable environmental construction by reusing recycled materials and utilizing industrial side streams.



## Ash & Slag Recycling

We offer fly and bottom ash recycling solutions for Waste-to-Energy and other industrial residues and recover valuable materials for reuse.



## Metal Recycling

We collect and sort different kinds of metal waste and we offer high-quality recycled metal granulates for industrial needs.



## Plastic Recycling

We recycle post-consumer plastic waste and produce Fortum Circo® recycled plastic, which is a sustainable raw material choice for plastics industry.



## Operations & Maintenance Services

Our O&M services cover activities necessary to operate your energy assets safely, sustainably and economically with high availability, efficiency and reliability.

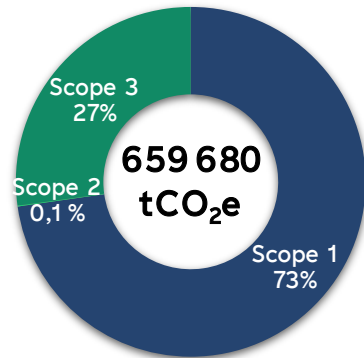


→ Visit our website ([www.fortum.com/recycling-waste](https://www.fortum.com/recycling-waste)) for more information about our services

# Our Carbon Footprint

We work towards reducing emissions in our own operations and our value chain, because we care about our environment

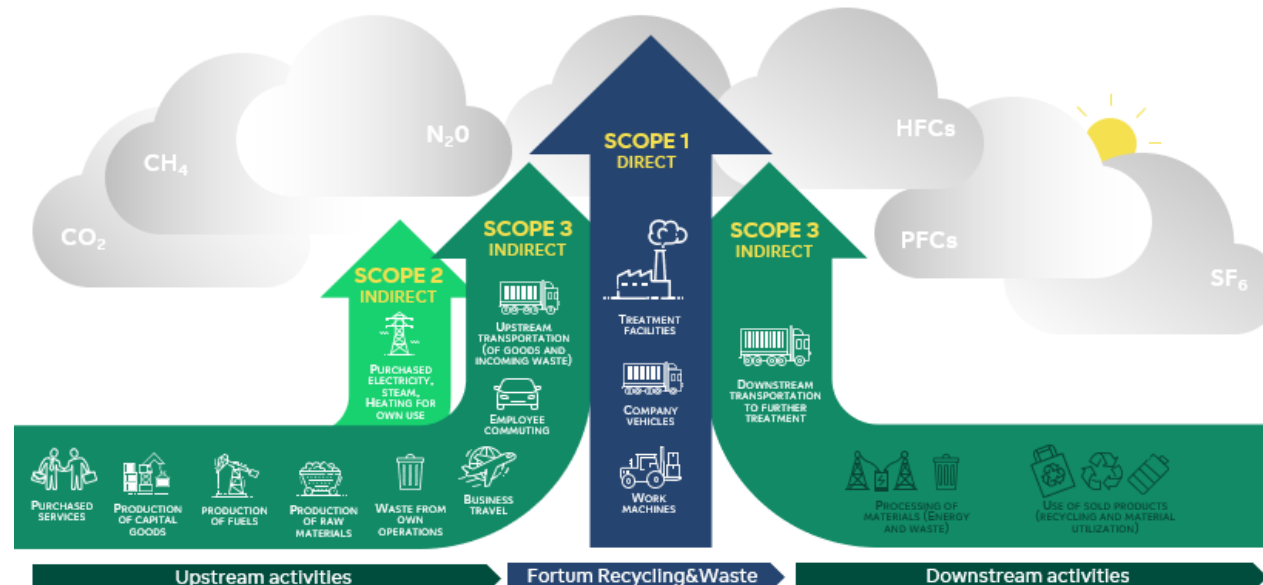
Greenhouse gas emissions during 2023



Our carbon footprint calculations are based on the Greenhouse Gas (GHG) Protocol, which is a widely accepted global standardized framework and methodology for measuring and managing greenhouse gas emissions. Out of the three scopes, Scope 1, which covers direct emissions, is by far the most intensive source of greenhouse gas emissions in Recycling & Waste. In 2023, our Scope 1 emissions accounted for 73% of all our emissions.

## Carbon footprint (tCO<sub>2</sub>e) in 2023

Scope 1	Direct emissions from our own operations	479 851 tCO <sub>2</sub> e
Scope 2	Indirect emissions from production of bought energy	567 tCO <sub>2</sub> e
Scope 3	Purchased materials, purchase services, capital goods, upstream transportation and logistics, waste formed in processes, business travel, employee commuting, and downstream transportation and logistics	179 262 tCO <sub>2</sub> e
Total		659 680 tCO <sub>2</sub> e



## Carbon2x – Recycled materials from CO<sub>2</sub>

Every year, Europeans generate nearly 100 million tonnes of unrecycled waste that is turned into energy. Fortum's objective is to reuse, recycle and utilize as much of this waste stream as possible. Incineration is an important part of the current waste management system, but it needs improvement.

We at Fortum believe that all carbon belongs in circulation. This means that emissions, such as CO<sub>2</sub> from waste incineration, are also turned into new raw materials. To do this at scale, we need to rethink CO<sub>2</sub> in recycling.

## Our solution is Carbon2x

The aim of the Carbon2x programme is to capture of the carbon dioxide released into the atmosphere during waste incineration and turn it into sustainable products. Carbon2x enables a lower carbon footprint by capturing and recycling carbon (CCU) from waste incineration. It can help decarbonize hundreds of waste-to-energy plants in Europe alone. The Carbon2x solution closes the loop of CO<sub>2</sub> circulation, allowing the captured emissions return to circulation as recycled raw materials.

→ Visit our website for more information about our Carbon2x program



# People

We have a strong Nordic presence with almost 1 000 employees in the Nordic countries and the UK

We, in Fortum Recycling & Waste, have operations in the Nordics and the UK consisting of environmental waste management services, hazardous waste treatment as well as material recycling services. In addition to our strong Nordic presence, we offer our services globally. Today we have almost 1 000 employees and a comprehensive network of around 40 locations. Our role is to find solutions for our customers' challenging environmental and waste problems to enable circularity of materials.

## Number of employees at year-end 2023



## Headcount at year-end 2023

Country	Employment type	Number of employees
Finland	Regular	483
	Temporary	6
Sweden	Regular	176
	Temporary	3
Denmark	Regular	159
	Temporary	7
Great Britain	Regular	66
	Temporary	2
Norway	Regular	3
Other	Regular	5
Total		910

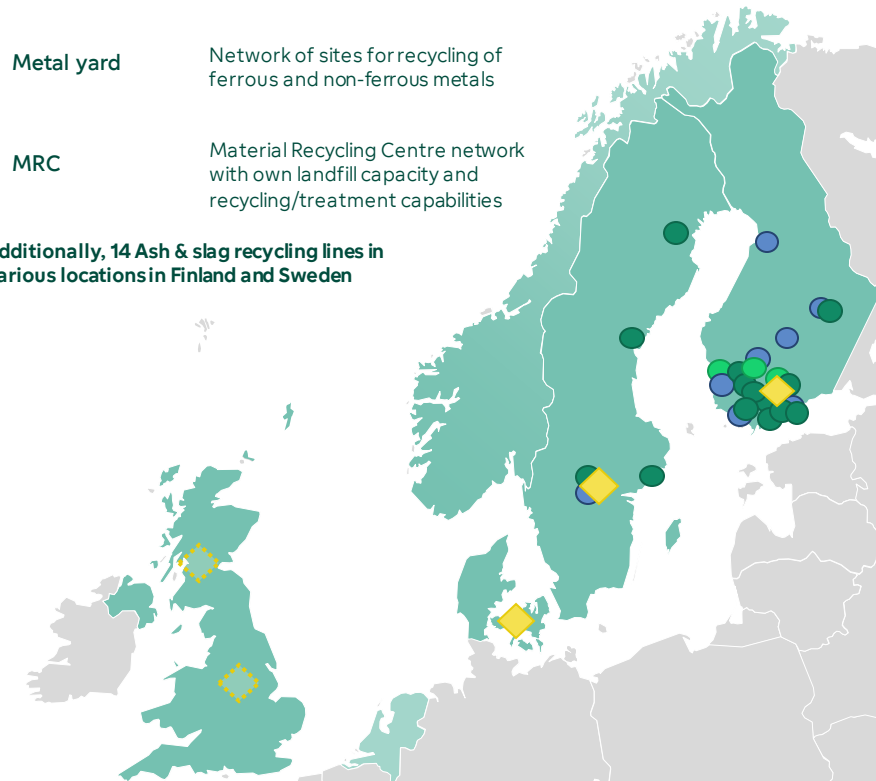
## Gender distribution



## Our presence in the Nordics and the UK

-  **Waste-to-Energy** High-temperature incineration for hazardous waste and waste-to-energy plants for non-hazardous waste
-  **Recycling site** Recycling facilities to recycle Ash & Slag, metals and plastics
-  **Metal yard** Network of sites for recycling of ferrous and non-ferrous metals
-  **MRC** Material Recycling Centre network with own landfill capacity and recycling/treatment capabilities

Additionally, 14 Ash & slag recycling lines in various locations in Finland and Sweden





# Health, Safety & Environment

Excellence in safety is the foundation of our business

Safety is our number one priority and excellence in safety is the foundation of our business. Our safety targets 2024 and SafetyCORE program continues to support our declared safety targets of “No severe accidents by 2025”. We focus on positive leading indicators and actions: Toolbox talks, Preventive reports (near misses, unsafe act / conditions, safety actions, safety walks/talks), visible Safety Leadership site visits and key safety actions.

## Key safety figures for 2023

The safety figures cover both own employees and subcontractors working on our sites.

Safety Indicator	Result in 2023
Total Recordable Injuries (TRIs) *	38
Total Recordable Injury Frequency (TRIF) *	12.5
Lost-time Injury Frequency (LTIF)	9.5
Number of Safety Toolbox Talks	2100
Number of Preventive Reports	4679

\* Total recordable injuries take into account lost time accidents, restricted workday cases and accidents that have required medical treatment measures except first aid cases.

## Preventive safety work

Our SafetyCORE program covers seven areas for which we set actions on an annual basis.



### Safety Leadership



### EHSS Operating Model



### Life-saving processes



### Contractor management



### Process safety



### Learning from incidents



### Ownership, pride in and safety of our sites



## Safety

Safety is our number one priority. We know the life cycle of waste and the risks associated with demanding waste management.



## Health

We take care of our employees' health and preventing harmful substances from polluting our surroundings or ending up in recycled material streams.



## Environment

We are a reliable partner towards decarbonized waste management and enable circular economy by offering innovative solutions for material efficiency.



# Fortum Recycling & Waste Contact Information



## Fortum Waste Solutions Oy

Kuulojankatu 1, FI-11120 Riihimäki, Finland

Tel. +358 10 7551 000

→ [Visit local website](#)



## Fortum Waste Solutions AB

Norrtorp 112, SE-692 85 Kumla, Sweden

Tel. +46 1930 5100

[sweden.rws@fortum.com](mailto:sweden.rws@fortum.com)

→ [Visit local website](#)



## Fortum Waste Solutions A/S

Lindholmvej 3, 5800 Nyborg, Denmark

Tel. +45 6331 7100

[denmark.rws@fortum.com](mailto:denmark.rws@fortum.com)

→ [Visit local website](#)



## Fortum Waste Solutions AS

Svelleveien 33, 2004 Lillestrøm, Norway

Tel. +47 9707 3861



## Fortum O&M (UK) Ltd

Grangemouth CHP Plant, P.O. Box 30

Bo'ness Road, Grangemouth, Great Britain

→ [Visit local website](#)



## International waste management services

→ [Contact information](#)

